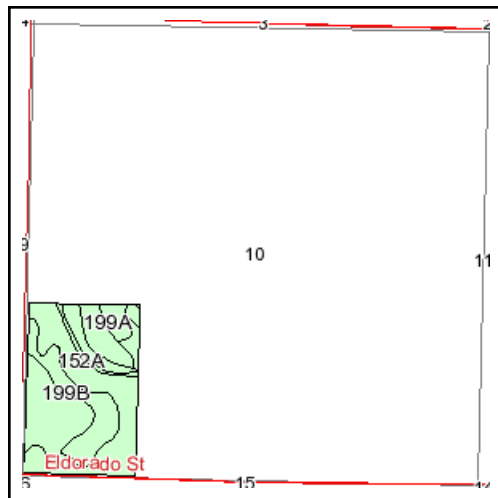
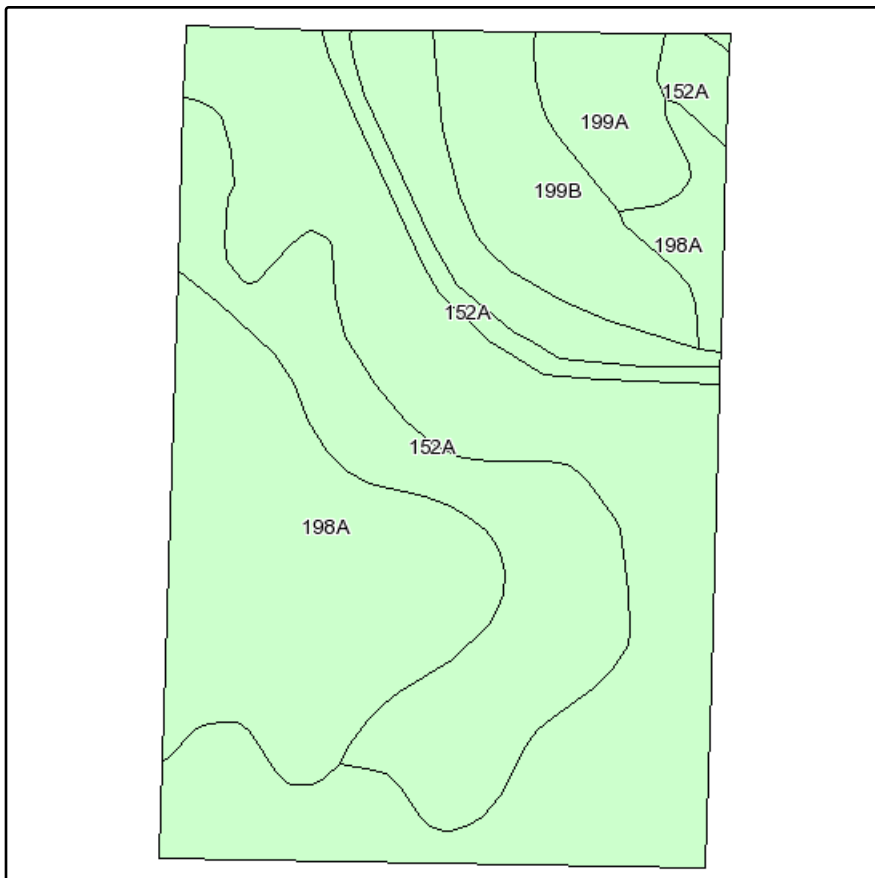
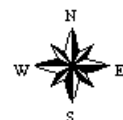


# Soils Map



State: **Illinois**  
 County: **Macon**  
 Location: **010-016N-001W**  
 Township: **Niantic**  
 Acres: **58.7**  
 Date: **8/10/2010**



Maps provided by:



©AgriData, Inc 2008  
 www.AgriDataInc.com

Fsa borders provided by the Farm Service Agency as of May 23, 2008.  
 Soils data provided by USDA and NRCS.  
 PLSS provided by Illinois State Geological Survey.

Code	Soil Description	Acres	Percent of field	Corn Bu/A	Soybeans Bu/A	Crop productivity index for optimum management
152A	Drummer silty clay loam, 0 to 2 percent slopes	26.2	44.7%	175	57	144
**199B	Plano silt loam, 2 to 5 percent slopes	15.8	26.9%	**173	**53	**141
198A	Elburn silt loam, 0 to 2 percent slopes	14.1	24.1%	178	55	143
199A	Plano silt loam, 0 to 2 percent slopes	2.6	4.3%	175	54	142
<b>Weighted Average</b>				<b>175.2</b>	<b>55.3</b>	<b>142.9</b>

**Table: Optimum Crop Productivity Ratings for Illinois Soil by K.R. Olson and J.M. Lang, Office of Research, ACES, University of Illinois at Champaign-Urbana.** Version: 12/21/2007 table S2rev B811

Crop yields and productivity indices for optimum management (B811) are maintained at the following NRES web site: <http://www.nres.uiuc.edu/soilproductivity>

\*\* Indexes adjusted for slope and erosion according to Bulletin 811 Table S3